



DT26

OPEN PAYLOAD

DT26

OPEN PAYLOAD

Make the most of a high endurance fixed-wing UAV system to integrate your own payload and get an affordable solution to boost your project.

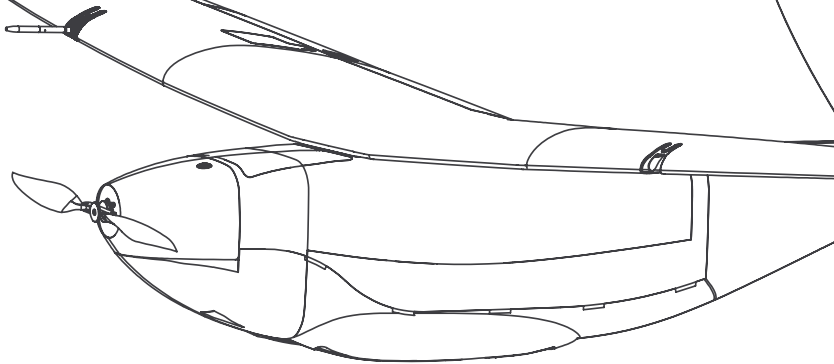
Reduce time-to-market and R&D efforts with an easy to use, field proven airborne test bed and embark your own payload.

Key benefits.

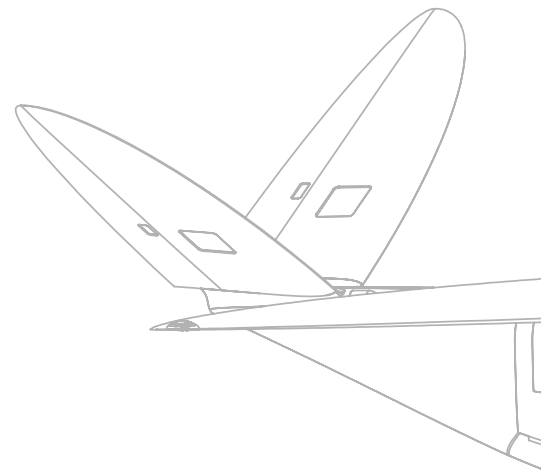
- Field-proven UAV system with a strong track record in industrial operations
- Highly stable payload platform, thanks to the fixed-wing drone design
- Ruggedized airframe providing solid protection for payloads
- High endurance to quickly acquire large amounts of data with any kind of payload
- Open hardware interface enabling easy integration and interoperability



A complete, flexible solution for the most demanding requirements.



- **High endurance fixed-wing UAV platform:** the perfect test bed for R&D projects, airborne sensing development, PoCs and early drone implementation programs.
- **Removable payload container** offering large space to house sensors and power supply
- **Motorized tracking antenna**, enabling long range communications
- **Very flexible mission planning and control software** for the most demanding missions: focus on your payload, leave the UAV do its job.
- **A technical diagnosis service** evaluating the potential compatibility between your payload and the DT26 Open Payload architecture
- **Access to the Delair Support services:** an experienced team of engineers and technicians dedicated to your success



Technical specifications.

Endurance

Up to 135 min

MTOW

18.5 kg

Wingspan/Length

3.3 m / 1.6 m

Material

Composite (fiberglass, carbon, kevlar),
EPP foam

Deployment time

8 min

Take off /Landing

Catapult / Belly (all terrain)

Cruise speed

60 km/h (31 kts)

Communication range

Up to 30 km (250 m AGL)

Very low cruise acoustic signature

< 80 dBA

(acoustic pressure converted at a distance of 1m)

OPERATING CONDITIONS

Wind resistance

36 km/h wind, moderate rain, -15 to 40 C (at sea level)

Take-off & landing altitude/ceiling

0 to 2000 m ASL @ 0 / 2750 m ASL

Landing accuracy

15 m x 50 m (Typical)

PAYLOAD BAY

Maximum weight

3 kg

Payload bay dimensions (length, width, height)

374 x 182 x 240 cm

Payload maximum dimensions (length, width, height)

369 x 178 x 235 cm

Voltage supply

5-12-24 VDC

Maximal power supply

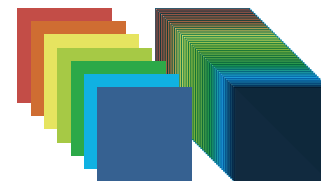
140 W

Integrate your preferred sensors.

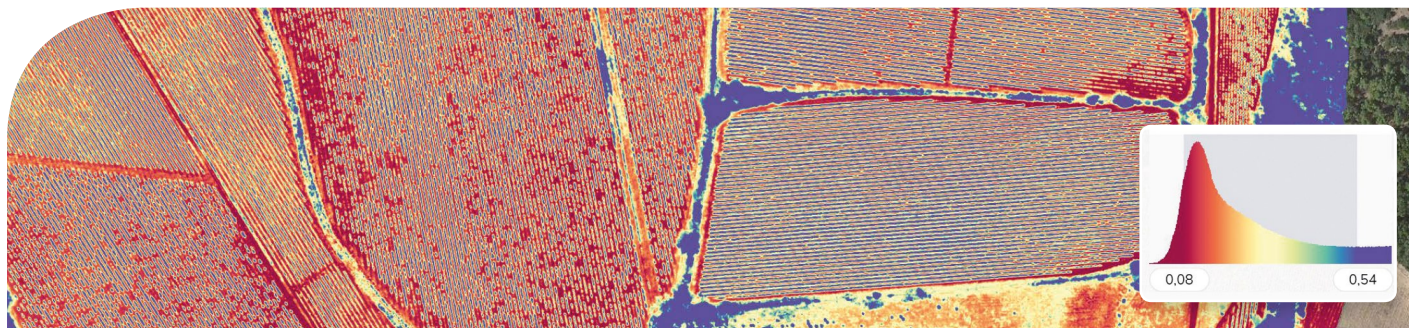
MULTISPECTRAL & HYPERSPECTRAL IMAGERY

Build a powerful sensing system and get high quality spectral images thanks to the high performance and stability of the DT26 Open payload.

- Crop health
- Irrigation monitoring & R&D in large orchards
- Environmental monitoring
- Mining exploration
- Infrastructure inspection



Multispectral vs Hyperspectral image



OPTICAL GAS IMAGERY

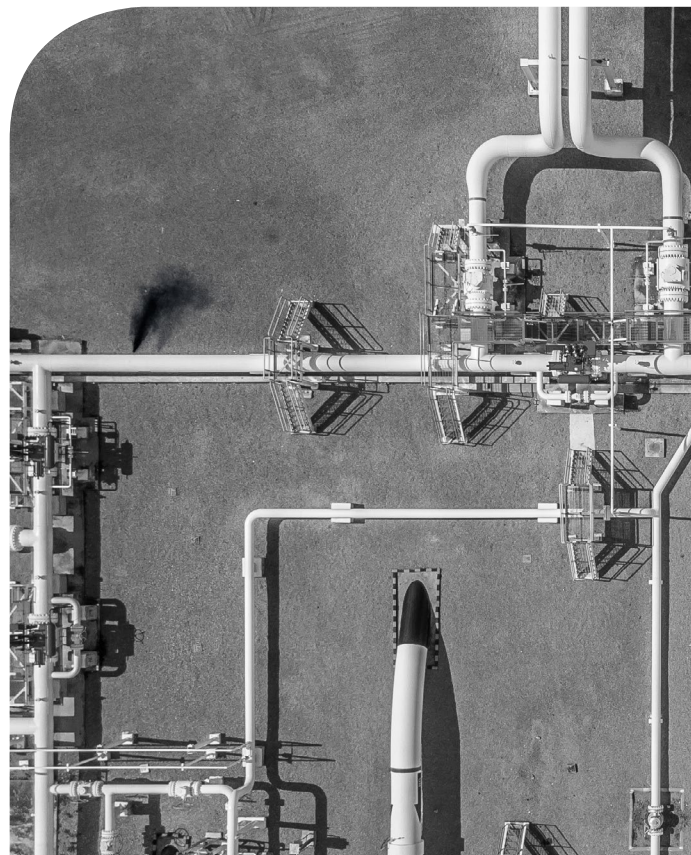
Integrate an optical gas imagery camera and benefit from long endurance flights to continuously monitor your infrastructure, access remote areas or hazardous zones and spot gas leaks faster enabling you to take action efficiently.

- Oil & gas infrastructure inspection
- Chemical complexes monitoring
- Power Generation and biogas plants monitoring

CARGO RACK

Benefit from a 3kg capacity which combined with the long range of the DT26 UAV enable you to rapidly transport goods from one point to another especially in remote areas and even in hazardous conditions.

- Mining operations
- Humanitarian operations
- Emergency operations



ULTRA HIGH RESOLUTION IMAGERY

Push the limits of aerial imagery by integrating ultra high resolution sensors to generate a detailed orthophoto and perform thorough inspections.

- Rails & roads inspections
- Powerlines & wind farms detailed inspections
- Mapping & Surveying



OBLIQUE IMAGERY

Get different views of the same target, from the same position, with an oblique sensor integrated in a stable, long endurance platform.

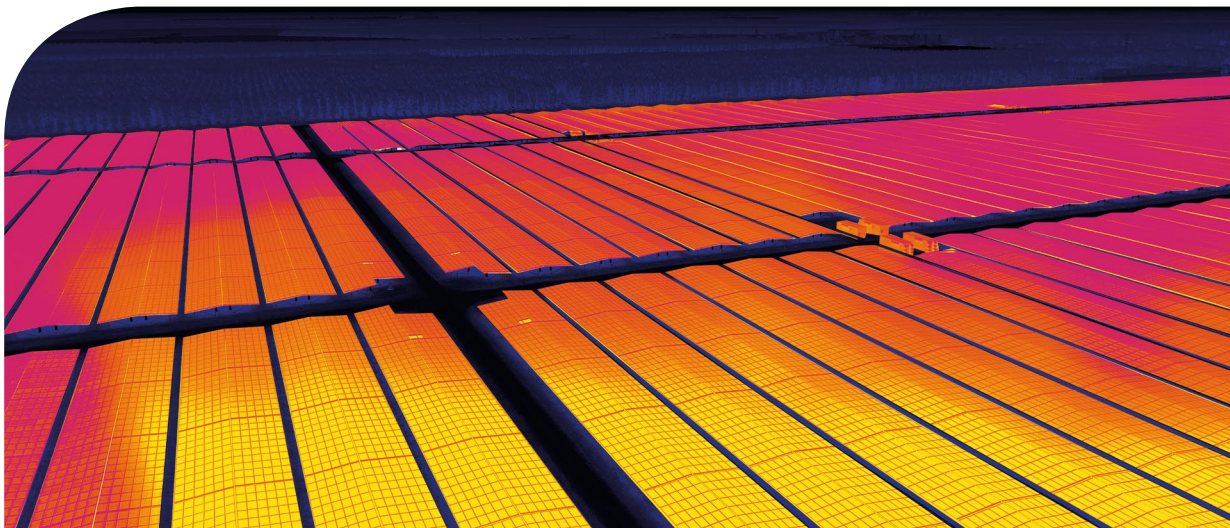
- AEC / BIM applications
- Powerlines & wind farms detailed inspections
- Cadastral surveys



RADIOMETRIC THERMAL IMAGERY AND 4K VIDEO

Combine the dual sensor advantages with the benefits of a fixed-wing drone and meet the most demanding requirements.

- Hot-spot detection and measurement, plus visual inspection of overlines
- Solar panels inspection with IR imagery
- Rails & roads inspections for small defects detection
- Water pipeline asset inspection



Package.

1 DT26 Open Payload UAV

Up to 135 min endurance
8 min deployment time

1 Mama Bear antenna

Up to 50 km range; datalink, control and command

2 Solapp flight control software licenses

(simulator included)

Technical diagnosis service



• 1 DT26 UAV Battery pack + charger

• 1 DT-Launcher catapult for DT26 UAV

• 1 UAV Remote control (DT26)

• 1 DT26 Rugged case

(Safe, robust transportation. Capacity: 1 drone. Dimensions*: 118 cm / 65 cm / 58 cm)

• 1 Mama Bear Rugged case

(Safe, robust transportation. Capacity: 1 antenna. Dimensions*: 117 cm / 40 cm / 20 cm)

• 1 DT26 Accessory Kit

(wing joiners, pitot, fasteners, disloc. shims)

• 1 DT26 Training

(10 days for 2 trainees) at DT Training Center + video tutorials & manuals

• 1 Technical support

(hotline, software upgrades, video tutorials)

• 1 One-year warranty



www.delair.aero

FRANCE: Toulouse - Headquarters | **USA:** Los Angeles | **BELGIUM:** Gent | **ASIA PACIFIC:** Singapore | **CHINA:** Beijing